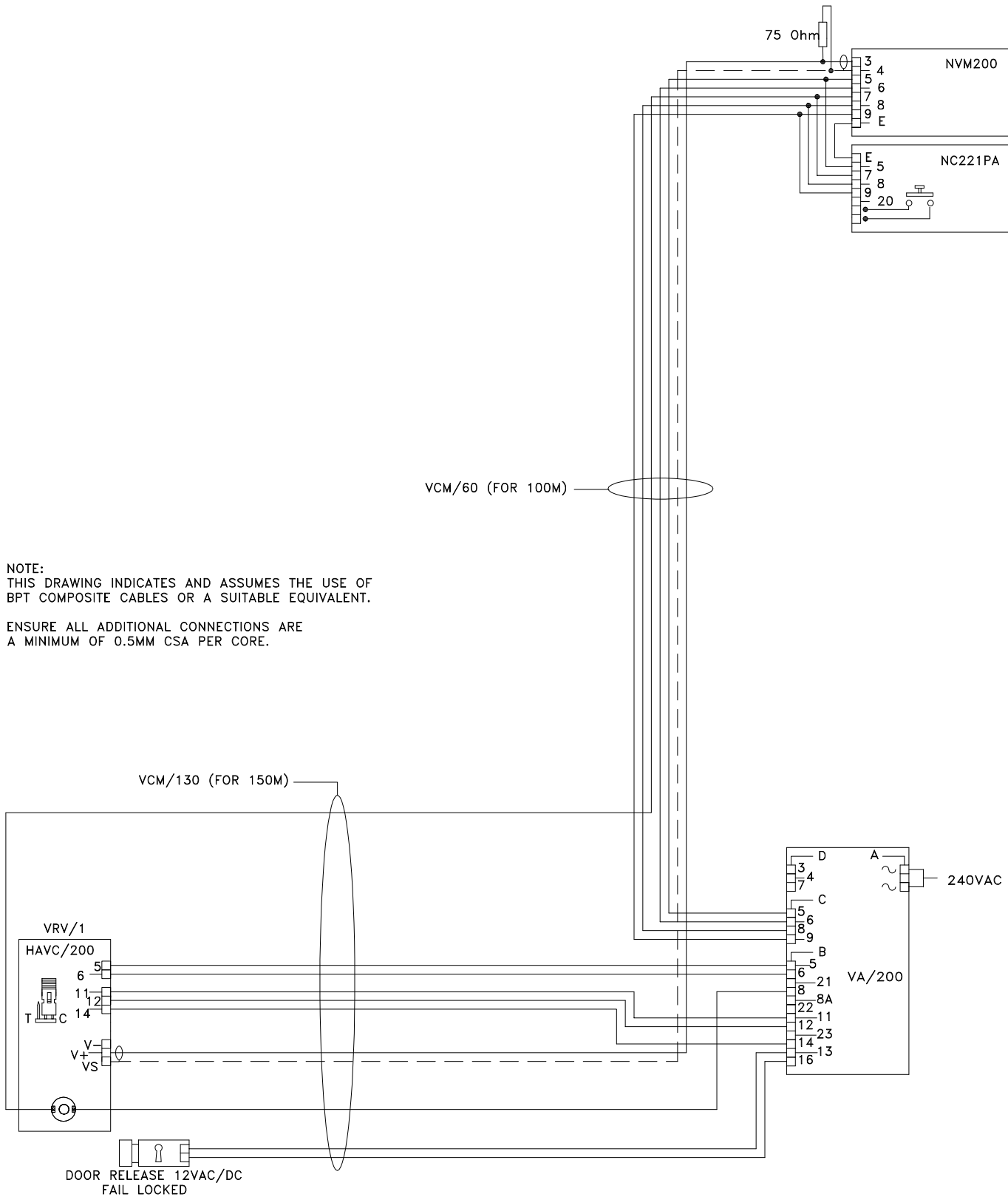


NOTE: CABLE EQUIVALENTS

VCM/130 = RG59 COAX + 4 CORES @ 1.0MMSQ + 8 CORES @ 0.5MMSQ
 VCM/60 = RG59 COAX + 2 CORES @ 1.0MMSQ + 3 CORES @ 0.5MMSQ



NOTE:
 THIS DRAWING INDICATES AND ASSUMES THE USE OF
 BPT COMPOSITE CABLES OR A SUITABLE EQUIVALENT.

ENSURE ALL ADDITIONAL CONNECTIONS ARE
 A MINIMUM OF 0.5MM CSA PER CORE.

BPT (UK) LTD. HERTS. ENGLAND	PREPARED FOR INSTALLER INFORMATION	DATE: 19/02/08	DRAWN: RC
		REVISED:	
DRAWING TITLE:	SINGLE HOUSE INSTALLATION USING 1 VR VIDEO ENTRY PANEL WITH 1 NOVA MONITOR	DRAWING No: B-1V1N1L	